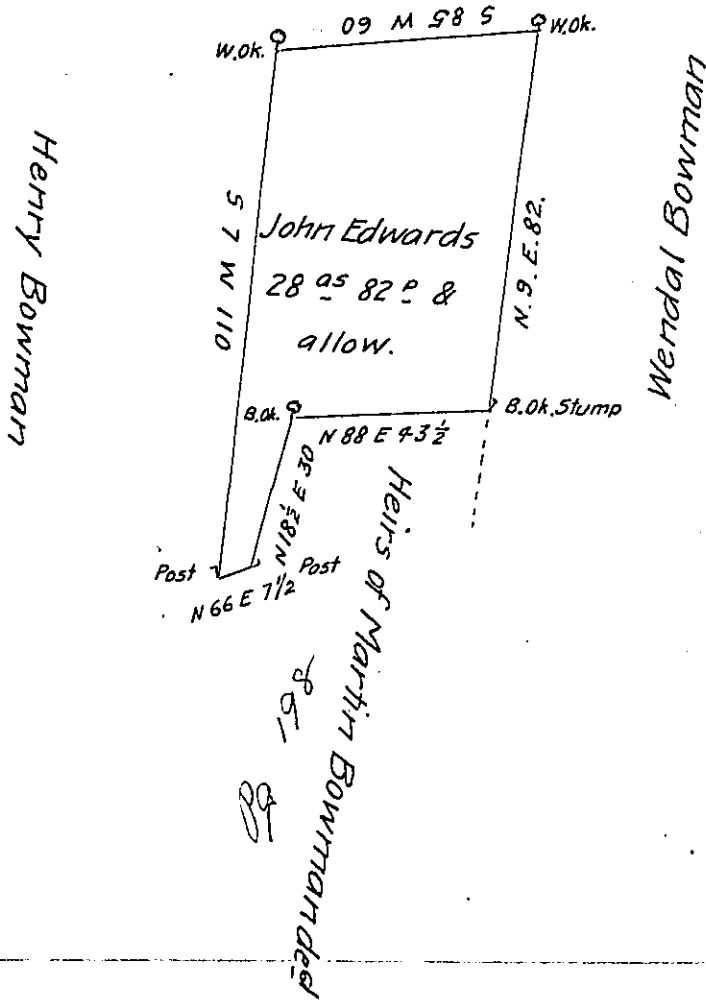


Conrad Hantz



Situate in Cumru Township, Berks County, Containing
 twenty eight acres and eighty two perches and the allowance of six per
 cent for roads &c. part of a larger tract, surveyed to John Edwards in
 pursuance of a warrant dated the 18th February 1734 survey'd & di-
 vided the 2nd January 1815 for Henry Bowman

p^s John M Hyneman D.S.

To Richard T. Leech Esq^r }
 Sur^r Gen^l, Penn^a }

IN TESTIMONY that the above is a copy of the original remaining on file in
 the Department of Internal Affairs of Pennsylvania, made
 conformably to an Act of Assembly approved the 16th day of
 February, 1833, I have hereunto set my Hand and caused
 the Seal of said Department to be affixed at Harrisburg,
 this twenty fifth day of October 1904

Isaac R. Brown
 Secretary of Internal Affairs.